

RAYHACK® Ulnar Shortening Generation II Low-Profile Locking Surgical Summary

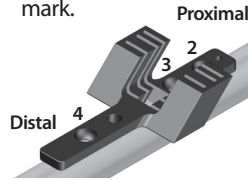
As described by John M. Rayhack, MD | Tampa, FL

- 1** Choose a volar or subcutaneous placement.

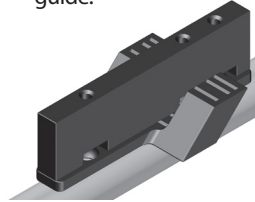
Apply the plate on the chosen surface 3cm from the distal ulna and mark hole #2.



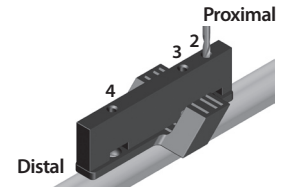
- 2** Align hole #2 of the saw guide over the bone mark.



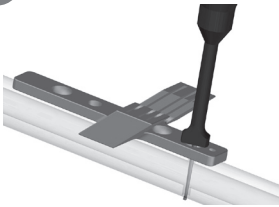
- 3** Attach the straight drill guide.



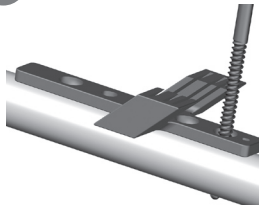
- 4** Drill hole #2 with a 2.5mm drill bit.



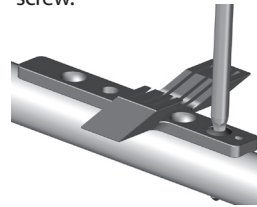
- 5** Measure the depth.



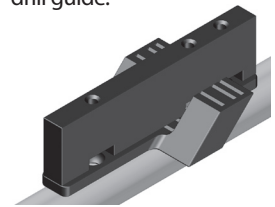
- 6** Tap hole #2.



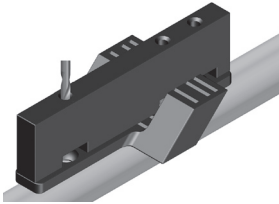
- 7** Insert a 3.5mm cortical screw.



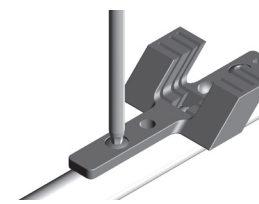
- 8** Reattach the straight drill guide.



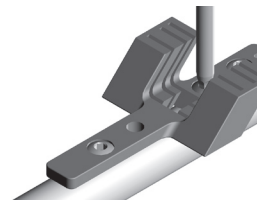
- 9** Drill hole #4 with a 2.5mm drill bit.



- 10** Measure, tap and insert screw #4.



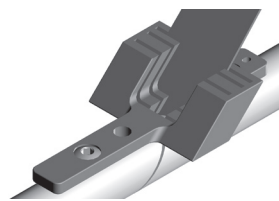
- 11** Repeat the process for screw #3.



- 12** Always cut the distal slot first; irrigate with slush saline while cutting.



- 13** Complete the proximal osteotomy cut.



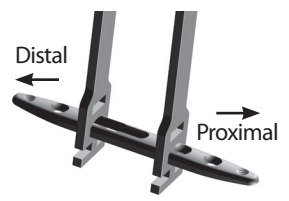
- 14** Gently remove the screws for later reinsertion and set in tray holding slots.



- 15** Remove the bone fragment.



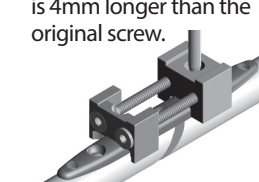
- 16** Bend the plate to the ulnar contour.



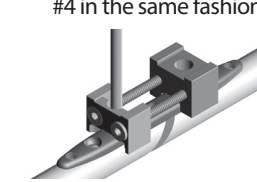
- 17** Apply the plate and insert the original #2 screw.



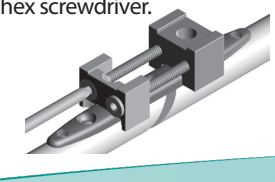
- 18** Attach the fixed block to hole #3 with a screw that is 4mm longer than the original screw.



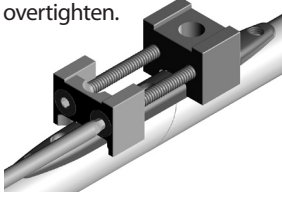
- 19** Loosely attach the sliding block to hole #4 in the same fashion.



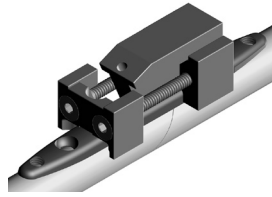
- 20** Gently and evenly compress the osteotomy with a 2.5mm hex screwdriver.



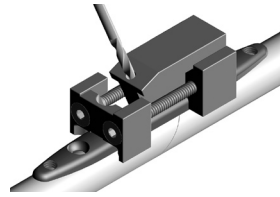
21 Manually observe the osteotomy site. Do not overtighten.



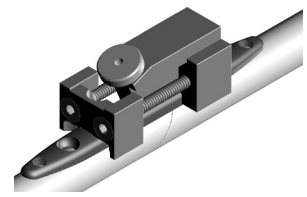
22 Insert the angled drill guide.



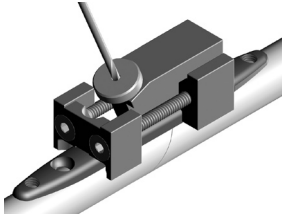
23 Drill the first cortex with a 2.7mm drill bit.



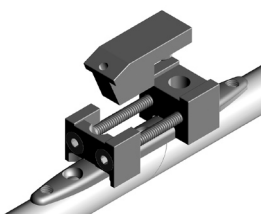
24 Insert the smooth drill bushing.



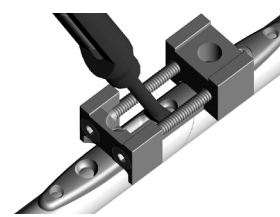
25 Drill the far cortex with a 2.0mm drill bit.



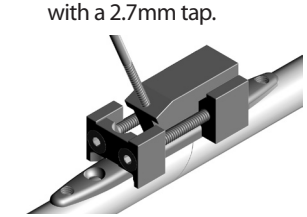
26 Remove the angled drill guide.



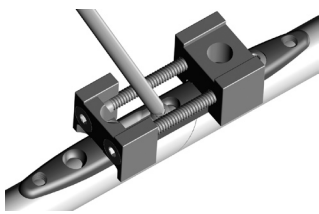
27 Measure the screw depth for bicortical fixation.



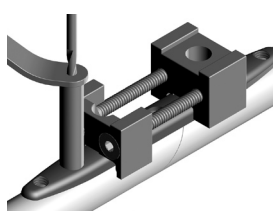
28 Reapply the angled drill guide and tap both cortices with a 2.7mm tap.



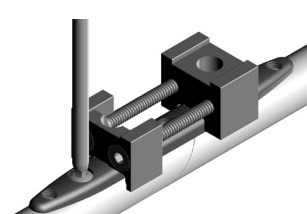
29 Gently insert a 2.7mm cortical interfragmentary lag screw.



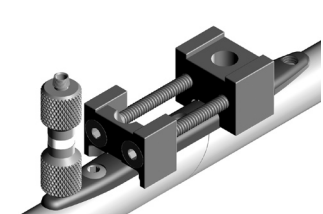
30 Drill hole #5 with the handheld drill guide.



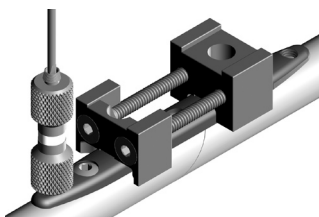
31 Measure, tap and insert a 3.5mm cortical screw.



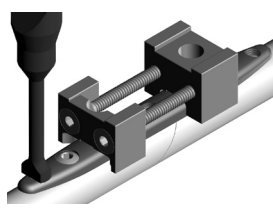
32 Screw in either end of the threaded drill bushing.



33 Drill both cortices with a 2.3mm bit.



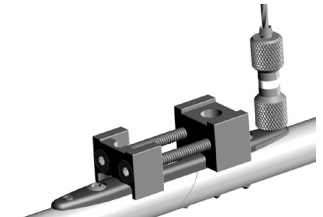
34 Measure the depth.



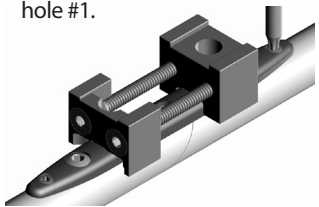
35 Insert a 2.7mm self-tapping locking screw with the star 8 driver.



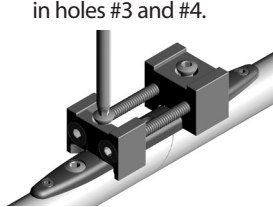
36 Repeat the drilling process for hole #1.



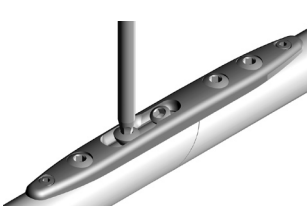
37 Gently insert a 2.7mm self-tapping locking screw into hole #1.



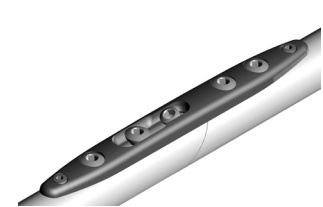
38 Remove and discard temporary cortical screws in holes #3 and #4.



39 Insert original screws #3 and #4.



40 Gently assure that all screws are securely tightened.



Prior to use of the system, the surgeon should refer to the product package insert and surgical technique for complete warnings, precautions, indications, contraindications and adverse effects.



Wright Medical Technology, Inc.
5677 Airline Road
Arlington, TN 38002
901.867.9971 phone
800.238.7188 toll-free
www.wmt.com

Wright Medical EMEA
Krijgsman 11
1186 DM Amstelveen
The Netherlands
011.31.20.545.0100
www.wmt-emea.com

**Trademarks and *Registered marks of Wright Medical Technology, Inc.
©2008 Wright Medical Technology, Inc. All Rights Reserved.

SO663-1108